

Chapter 2

BASIC PENTATONIC STRUCTURE

Pentatonic Scales

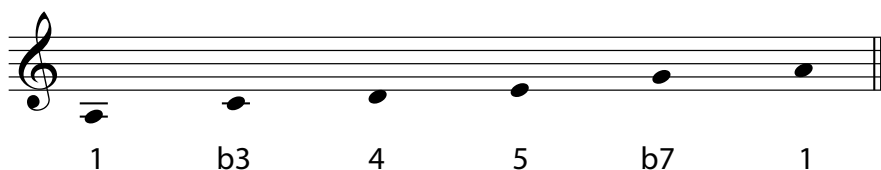
The Pentatonic Scale is one of the most commonly used scales in the world. There are many different pentatonic scales all of which are constructed of five notes only. The main focus of this project is the Relative Minor Pentatonic Scale, commonly known as the Minor Pentatonic Scale.

The A Minor Pentatonic Scale (Ex.1b) starts on the 5th note of it's parent scale: C Major Pentatonic (Ex. 1a)

Example 1a: C Major Pentatonic Scale



Example 1b: A Minor Pentatonic Scale



As you can see, both scales share the same notes, however by changing the starting note, a different texture to the sound is created.